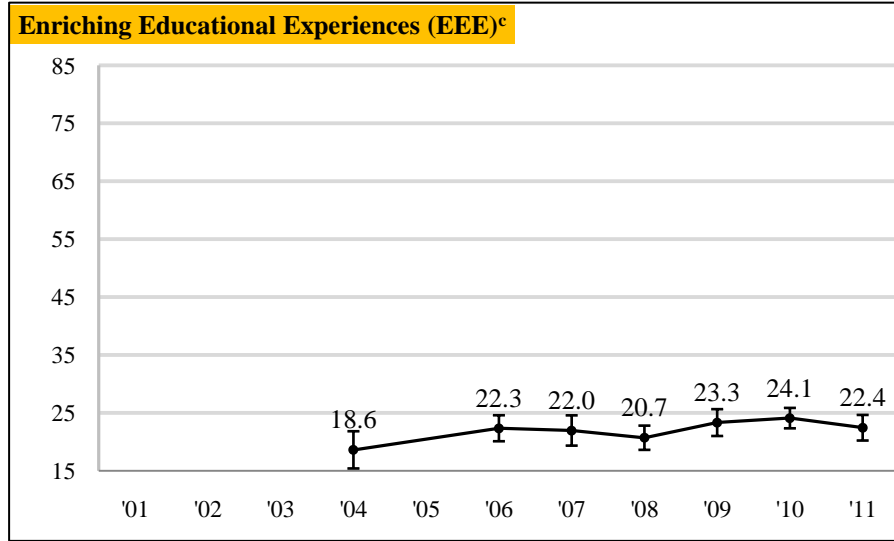
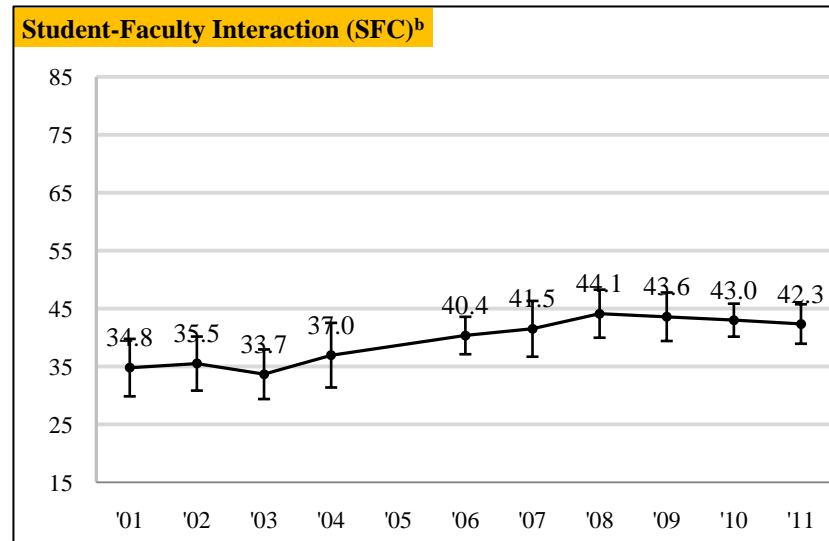
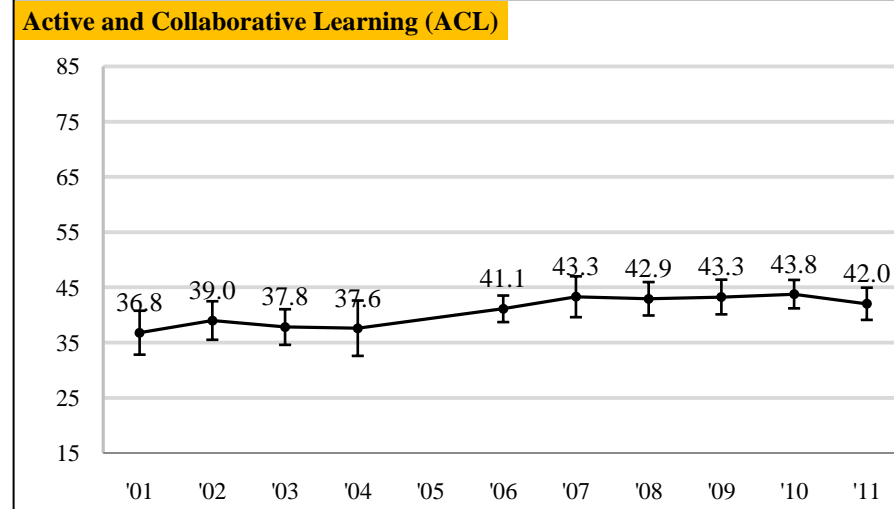
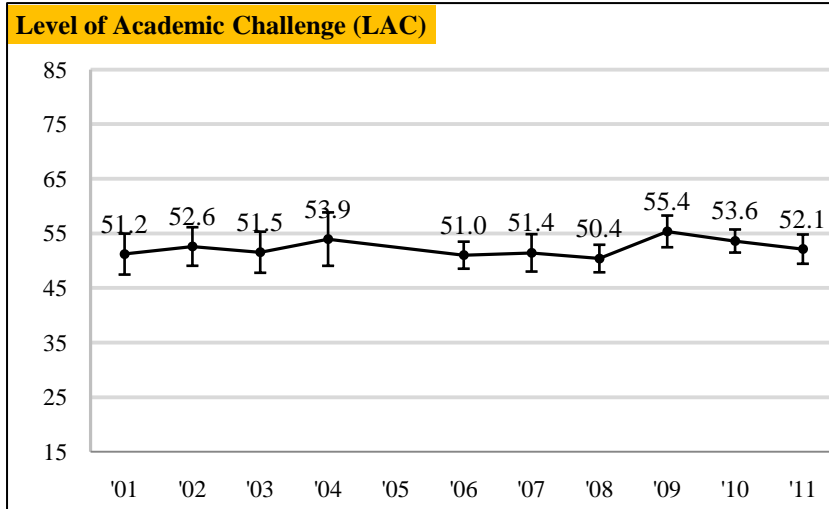
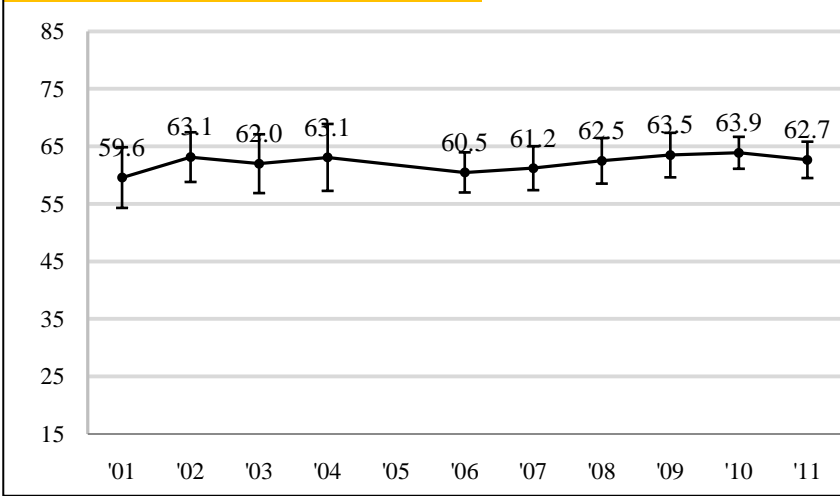


First-Year Students



Supportive Campus Environment (SCE)



Notes:

- a. Recalculated benchmark scores are charted for all years of participation since 2001. See page 5 for detailed statistics. For more information and recommendations for analyzing multi-year NSSE data, consult the *Multi-Year Data Analysis Guide*. nsse.iub.edu/pdf/MYDAG.pdf
- b. For institutions with 2001-2003 data, due to a change to the 'research with faculty' item in 2004, 'SFC' (a version of 'SFI' that does not include that item) is charted on this page. Statistics for both versions are provided on page 5.
- c. 2001-2003 'EEE' scores are not provided because response options for several 'EEE' items were altered in 2004, and thus scores are incompatible with those of later years.



**NSSE 2011 Multi-Year Benchmark Report
Indiana University East
First-Year Students**

		2001	2002	2003	2004	2005	2006	2007	2008	##	2010	2011
Level of Academic Challenge	LAC	51.2	52.6	51.5	53.9		51.0	51.4	50.4	##	53.6	52.1
	n	66	67	63	47		130	84	96	97	174	113
	SD	15.5	14.7	15.2	17.1		14.4	16.0	12.6	##	14.2	14.6
	SEM	1.91	1.80	1.92	2.50		1.26	1.75	1.29	##	1.08	1.37
	Upper	55.0	56.1	55.3	58.8		53.5	54.9	52.9	##	55.7	54.8
	Lower	47.5	49.1	47.8	49.1		48.5	48.0	47.9	##	51.5	49.4
Active and Collaborative Learning	ACL	36.8	39.0	37.8	37.6		41.1	43.3	42.9	##	43.8	42.0
	n	66	67	63	47		138	92	95	##	179	118
	SD	16.5	14.6	13.1	17.5		14.4	18.1	15.1	##	17.5	16.2
	SEM	2.03	1.78	1.65	2.56		1.23	1.89	1.54	##	1.31	1.49
	Upper	40.8	42.5	41.0	42.6		43.5	47.0	46.0	##	46.3	45.0
	Lower	32.8	35.5	34.6	32.6		38.7	39.6	39.9	##	41.2	39.1

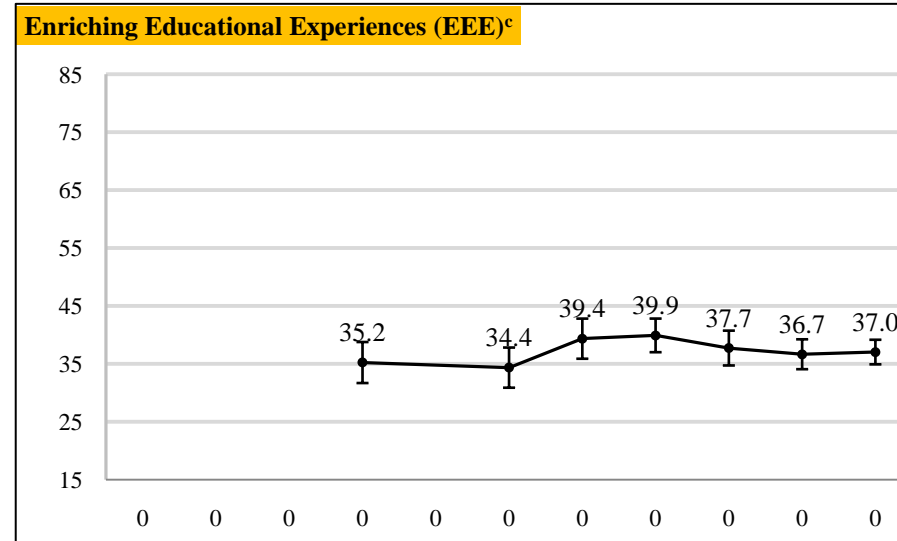
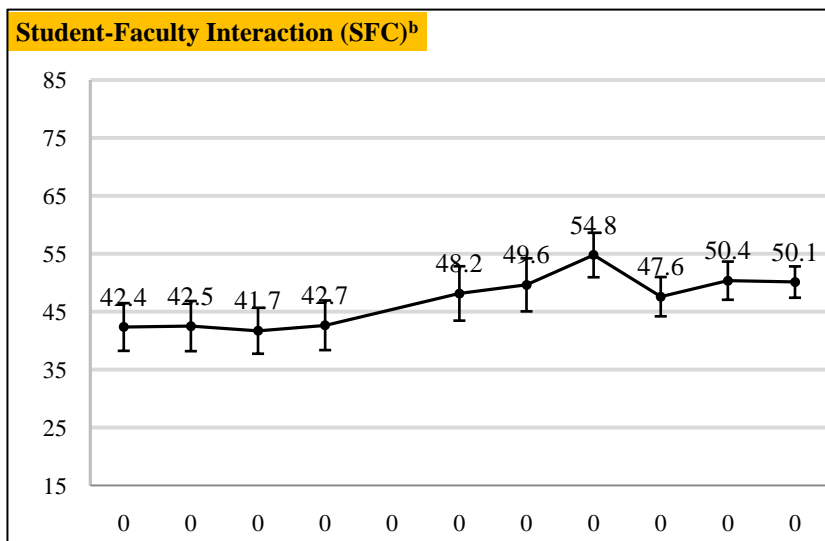
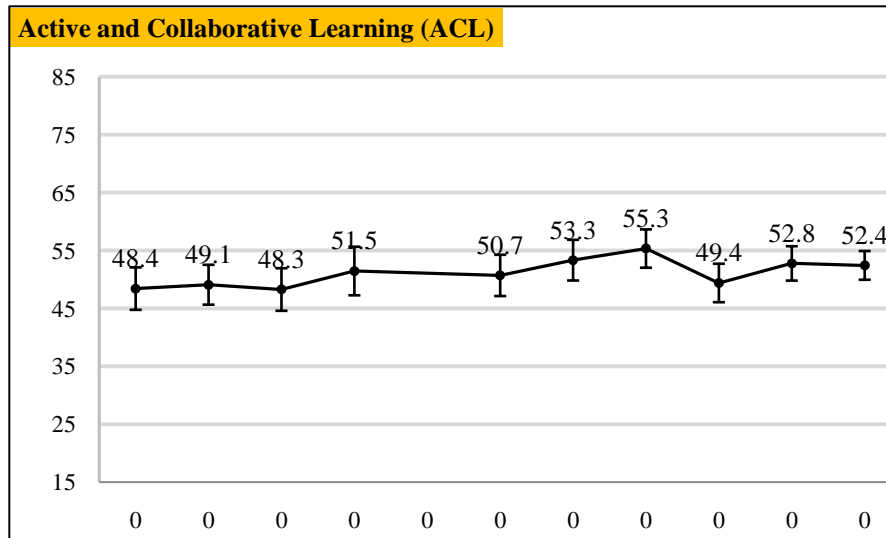
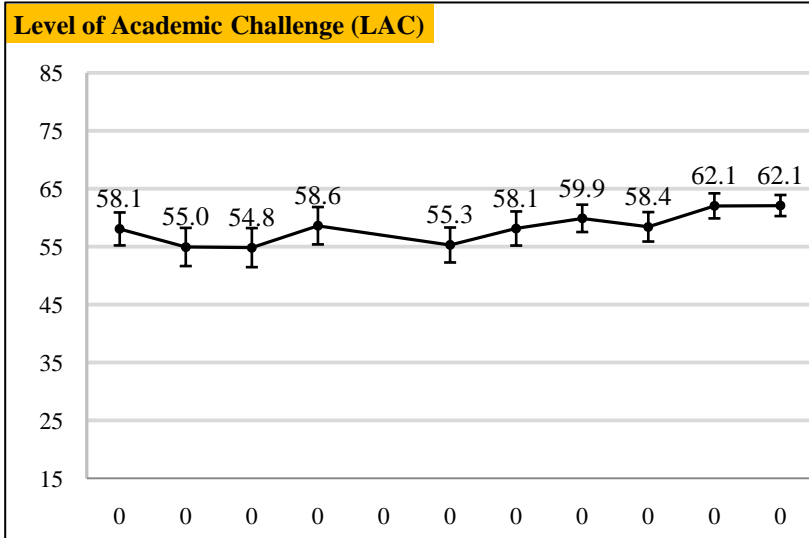
Student Faculty Interactio n^b	SFC	34.8	35.5	33.7	37.0	40.4	41.5	44.1	##	43.0	42.3
	n	66	67	63	47	134	87	97	99	175	115
	<i>SD</i>	20.5	19.5	17.4	19.5	19.1	23.0	20.9	##	19.3	18.6
	<i>SEM</i>	2.53	2.38	2.19	2.85	1.65	2.46	2.12	##	1.45	1.74
	Upper	39.8	40.2	38.0	42.5	43.6	46.3	48.3	##	45.9	45.8
	Lower	29.9	30.8	29.4	31.4	37.1	36.7	40.0	##	40.2	38.9
<hr/>											
	SFI	-	-	-	31.3	34.6	36.3	37.9	##	37.0	35.8
	n	-	-	-	47	132	87	96	97	175	113
	<i>SD</i>	-	-	-	17.2	17.4	20.9	18.8	##	17.5	16.5
	<i>SEM</i>	-	-	-	2.52	1.51	2.24	1.91	##	1.33	1.55
	Upper	-	-	-	36.2	37.6	40.7	41.6	##	39.6	38.8
	Lower	-	-	-	26.3	31.7	31.9	34.1	##	34.4	32.8
<hr/>											
Enriching Educatio nal Experienc es^c	EEE	-	-	-	18.6	22.3	22.0	20.7	##	24.1	22.4
	n	-	-	-	47	130	81	94	95	170	110
	<i>SD</i>	-	-	-	11.2	13.1	12.0	10.4	##	11.7	11.8
	<i>SEM</i>	-	-	-	1.64	1.15	1.33	1.07	##	.90	1.13
	Upper	-	-	-	21.8	24.6	24.6	22.8	##	25.9	24.6
	Lower	-	-	-	15.4	20.1	19.3	18.6	##	22.3	20.2
<hr/>											
Supportiv e Campus Environm ent	SCE	59.6	63.1	62.0	63.1	60.5	61.2	62.5	##	63.9	62.7
	n	65	67	63	47	128	78	92	93	168	109
	<i>SD</i>	21.8	18.0	20.6	20.3	20.1	17.2	19.4	##	18.4	16.9
	<i>SEM</i>	2.69	2.20	2.61	2.97	1.78	1.95	2.02	##	1.42	1.61
	Upper	64.8	67.4	67.1	68.9	64.0	65.0	66.4	##	66.7	65.8
	Lower	54.3	58.8	56.9	57.3	57.0	57.4	58.5	##	61.1	59.5

^a n=number of respondents; *SD*=standard deviation; *SEM*=standard error of the mean; Upper/Lower=95% confidence interval limits

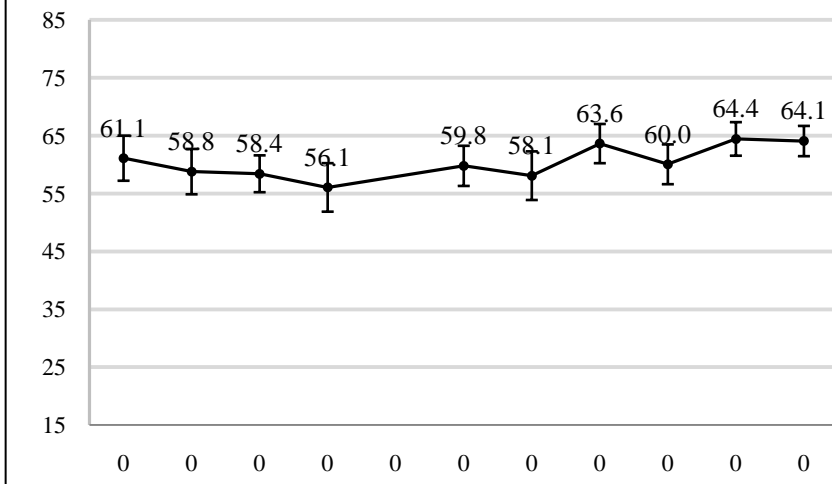
^b Due to a change to the 'research with faculty' item in 2004, statistics for 'SFC' (the alternate version of student-faculty interaction that does not include that item) are reported for all years, and 'SFI' is reported beginning with 2004.

^c 2001-2003 'EEE' scores are not provided because they are not comparable with those of later years. This is because response options for several of 'EEE' items were substantially altered in 2004.

Seniors



Supportive Campus Environment (SCE)



Notes:

- a. Recalculated benchmark scores are charted for all years of participation since 2001. See page 7 for detailed statistics. For more information and recommendations for analyzing multi-year NSSE data, consult the *Multi-Year Data Analysis Guide*. nsse.iub.edu/pdf/MYDAG.pdf
- b. For institutions with 2001-2003 data, due to a change to the 'research with faculty' item in 2004, 'SFC' (a version of 'SFI' that does not include that item) is charted on this page. Statistics for both versions are provided on page 7.
- c. 2001-2003 'EEE' scores are not provided because response options for several 'EEE' items were altered in 2004, and thus scores are incompatible with those of later years.



NSSE 2011 Multi-Year Benchmark Report Indiana University East Seniors

		2001	2002	2003	2004	2005	2006	2007	2008	##	2010	2011
Level of Academic Challenge	LAC	58.1	55.0	54.8	58.6		55.3	58.1	59.9	##	62.1	62.1
	n	77	97	103	78		105	104	121	##	176	219
	SD	12.8	16.6	17.5	14.5		15.8	15.4	13.3	##	14.6	13.8
	SEM	1.45	1.68	1.72	1.65		1.54	1.50	1.21	##	1.10	.93
	Upper	60.9	58.3	58.2	61.9		58.3	61.1	62.3	##	64.2	63.9
Lower	55.2	51.7	51.5	55.4		52.3	55.2	57.5	##	59.9	60.3	
Active and Collaborative Learning	ACL	48.4	49.1	48.3	51.5		50.7	53.3	55.3	##	52.8	52.4
	n	77	97	103	78		108	108	125	##	182	219
	SD	16.4	17.3	19.0	18.9		18.9	18.6	18.9	##	20.5	18.8
	SEM	1.87	1.76	1.87	2.14		1.82	1.79	1.69	##	1.52	1.27
	Upper	52.1	52.5	51.9	55.7		54.3	56.9	58.7	##	55.8	54.9
Lower	44.8	45.7	44.6	47.3		47.1	49.8	52.0	##	49.8	50.0	

Student Faculty Interaction^b	SFC	42.4	42.5	41.7	42.7	48.2	49.6	54.8 ##	50.4	50.1
	n	76	97	103	78	107	106	123 ##	176	219
	SD	18.4	21.8	20.5	19.3	24.7	24.1	21.7 ##	22.3	20.4
	SEM	2.10	2.21	2.02	2.19	2.40	2.34	1.96 ##	1.68	1.38
	Upper	46.5	46.9	45.7	46.9	52.9	54.2	58.6 ##	53.7	52.8
	Lower	38.2	38.2	37.8	38.4	43.5	45.1	51.0 ##	47.1	47.4
	SFI	-	-	-	38.8	42.4	44.0	47.8 ##	43.9	44.6
	n	-	-	-	78	107	105	123 ##	176	219
	SD	-	-	-	19.5	23.4	22.3	20.0 ##	20.7	19.8
	SEM	-	-	-	2.21	2.27	2.17	1.80 ##	1.56	1.34
	Upper	-	-	-	43.1	46.9	48.3	51.3 ##	47.0	47.2
	Lower	-	-	-	34.5	38.0	39.8	44.3 ##	40.8	42.0
Enriching Educational Experiences^c	EEE	-	-	-	35.2	34.4	39.4	39.9 ##	36.7	37.0
	n	-	-	-	78	104	103	121 ##	174	218
	SD	-	-	-	16.0	18.0	18.0	16.3 ##	17.3	16.0
	SEM	-	-	-	1.81	1.77	1.77	1.48 ##	1.32	1.08
	Upper	-	-	-	38.8	37.8	42.8	42.8 ##	39.2	39.2
	Lower	-	-	-	31.7	30.9	35.9	37.0 ##	34.1	34.9
Supportive Campus Environment	SCE	61.1	58.8	58.4	56.1	59.8	58.1	63.6 ##	64.4	64.1
	n	77	96	102	78	103	101	119 ##	172	217
	SD	17.5	19.6	16.4	18.9	18.0	21.6	18.8 ##	19.4	19.7
	SEM	1.99	2.00	1.62	2.14	1.77	2.14	1.73 ##	1.48	1.33
	Upper	65.0	62.7	61.6	60.2	63.3	62.3	67.0 ##	67.3	66.7
	Lower	57.2	54.9	55.2	51.9	56.3	53.9	60.2 ##	61.5	61.5

^a n=number of respondents; SD=standard deviation; SEM=standard error of the mean; Upper/Lower=95% confidence interval limits

^b Due to a change to the 'research with faculty' item in 2004, statistics for 'SFC' (the alternate version of student-faculty interaction that does not include that item) are reported for all years, and 'SFI' is reported beginning with 2004.

^c 2001-2003 'EEE' scores are not provided because they are not comparable with those of later years. This is because response options for several of 'EEE' items were substantially altered in 2004.