

**INDIANA UNIVERSITY EAST**  
**6<sup>th</sup> ANNUAL STUDENT RESEARCH DAY PROGRAM**  
**April 2, 2010**



**CALL FOR PAPERS & POSTER PRESENTATIONS**

**WHY SUBMIT AN ABSTRACT?** Student Research Day is a special event for students to showcase their work and for the campus to celebrate their achievements. By recognizing the hard work of our student scholars we hope to celebrate the extraordinary efforts of our students and inspire others to excel in research, academic, and creative work. Student work in independent scholarship for courses, independent study, summer research programs, etc. is acceptable forms of student scholarship. We invite you to submit your work for inclusion in this year's event

**ELIGIBILITY:** Any student currently enrolled for a minimum of six credit hours, during the 2009/2010 academic year, in an undergraduate program, at Indiana University East.

**SUBMISSION:** All entrants must submit an abstract,<sup>1</sup> as an attachment, by email to Dr. Dale Beach at [beachd@iue.edu](mailto:beachd@iue.edu). Please make sure to reference "Student Research Day" in the subject line of the email. The abstract should include the Title of the research project, name(s) of the author(s) with the presenting author in Bold type, and contact information (including email address). Abstracts are limited to 100 words and should describe the general theme of the presentation and, where relevant, the methods and results. When submitting the abstract, entrants must indicate in the email the type of presentation requested—oral presentation or poster presentation.

**1. Oral Presentation of Research Project**

Oral presentations will be made to a field of peers, faculty, and guests attending the event. All of the oral presentations will be given during the afternoon of April 2, 2010. The guidelines for oral presentations are included in this document. Participants will be notified of the time and place for the presentations.

**2. Poster Presentation of Research Project**

Poster presentations will be made to members of the Campus community attending the event. The guidelines for poster presentations are included in this document. Participants will be notified of the time and place for the presentations. Please carefully note the size restrictions for the posters.

**PRIZES:** All students participating in the event will receive a certificate commemorating their scholarship and achievement. One student will be awarded the "Top Paper Presentation of the 2010 Student Research Day" on the merits of his/her paper.

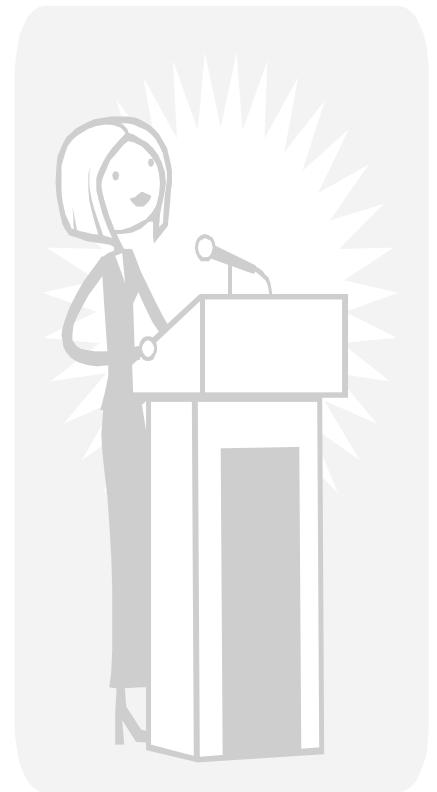
**SUBMISSION DEADLINE: March 12, 2010**

---

<sup>1</sup> Abstract submissions should be in a Microsoft Word compatible format.

# ORAL PRESENTATIONS OF RESEARCH PROJECTS

Oral presentations provide a forum in which authors can present research results to a large audience of peers. To make effective use of this format, however, authors must keep in mind that audiences can be quickly overwhelmed by too much material presented too rapidly. In the brief time allocated for contributed talks, authors should summarize the work, outline the methods used (if applicable), and present key results. Remember that audiences respond to the mode of presentation and the enthusiasm of the speaker as well as to the content.



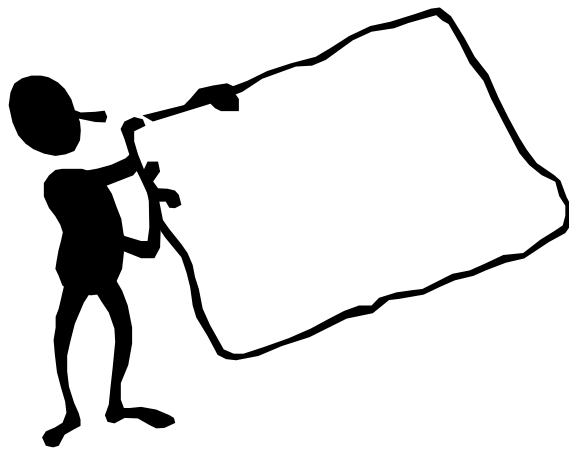
## General Guidelines for Oral Presentations

1. Oral presentations should contain: introduction, objectives, methods (when applicable), results, and conclusions/implications. Objectives should be clearly stated. Primarily discuss the results and conclusions.
2. Visuals enhance the effectiveness of your presentation. Think in terms of graphic impact. However, simplicity and legibility are more important than artistic accomplishments. Charts, drawings photographs, and other illustrations are encouraged.
3. Presentations are scheduled in 10-minute blocks. Three things must happen during this block: the speaker introduction (1 minute); the talk (6-7 minutes); and the question and answer period (2-3 minutes). The moderator will notify you when your presentation reaches 7 minutes. You will be asked to leave the podium at 10 minutes.
4. Presentations must start and end on time, no exceptions, because they are coordinated with other presentations.
5. Rehearse your talk before the presentation to be sure that it does not exceed the allotted time. Have peers evaluate your talk.
6. Computers, lighting, and microphones are not always dependable. Be prepared to give your talk without such aids, if necessary.

# POSTER ORAL PRESENTATIONS OF RESEARCH PROJECTS

Poster presentations are an effective forum for the exchange of information and a means to communicate research.

Poster session participants place materials such as pictures, abstracts, data, graphs, diagrams and narrative text on boards (36 X 48 inches). Participants informally discuss their presentations with attendees.



## Poster Session Guidelines

- Remember that this is a **VISUAL** presentation - try to explain your idea in a visually appealing way.
- Include your abstract on your poster.
- Write in a narrative paragraph form. Don't use an outline form.
- Do not use the first person in the abstract: I, we, my, mine, our.
- Spell out acronyms in their entirety the first time used, followed by the acronym in parenthesis.
- Keep in mind that the only basis on which the audience/judges may evaluate the poster session is the abstract. Make certain that it clearly conveys the purpose of your poster session, is well written, and is void of grammatical and typographical errors.
- Be sure to cite your sources.
- Print and keep a copy of your poster session abstract before sending it.

## Creating and Mounting your Poster

- Visuals enhance the effectiveness of your presentation. Think in terms of graphic impact. However, simplicity and legibility are more important than artistic accomplishments. Charts, drawings photographs, and other illustrations are encouraged.
- A heading should be prepared for your presentation
- Your name should also be included on the heading, but can be printed in a smaller font.
- ALL lettering should be easily legible at a distance of (4) feet. An appropriate font size would be 24 point to 60 point.